

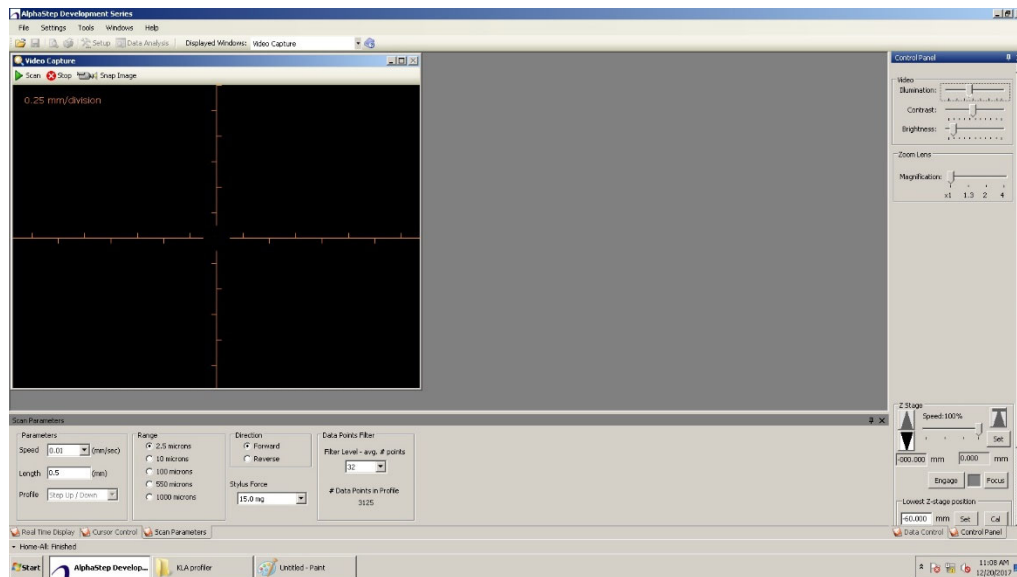
KLA-Tencor D-300 Profiler

9/08/20

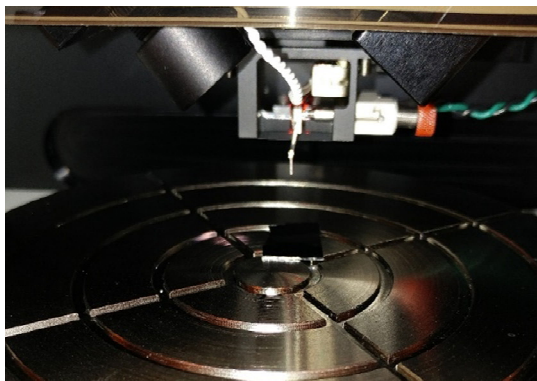


Basic Operation

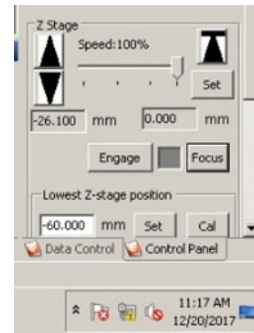
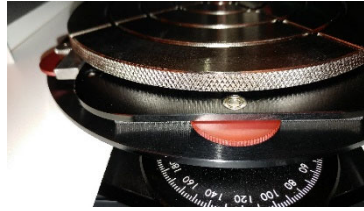
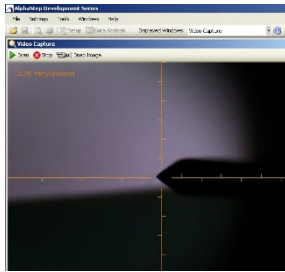
1. Log in FOM through general usage computer to access profiler computer screen.
2. Turn on the power to the profiler on the back panel. Wait at least **10 seconds** before running the profiler software to allow the stage and computer to establish the USB connection.
3. Open the software.



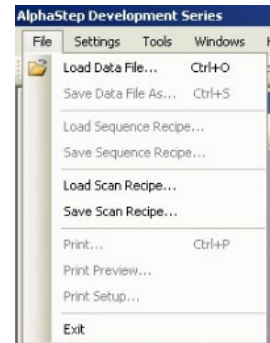
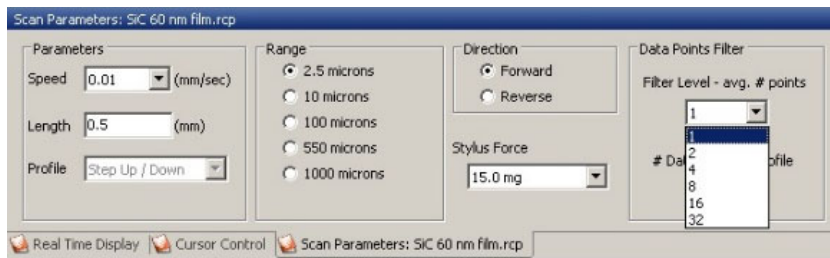
4. Load the sample: **Make sure the Stylus is UP**. Place the sample on the stage table and under the stylus.



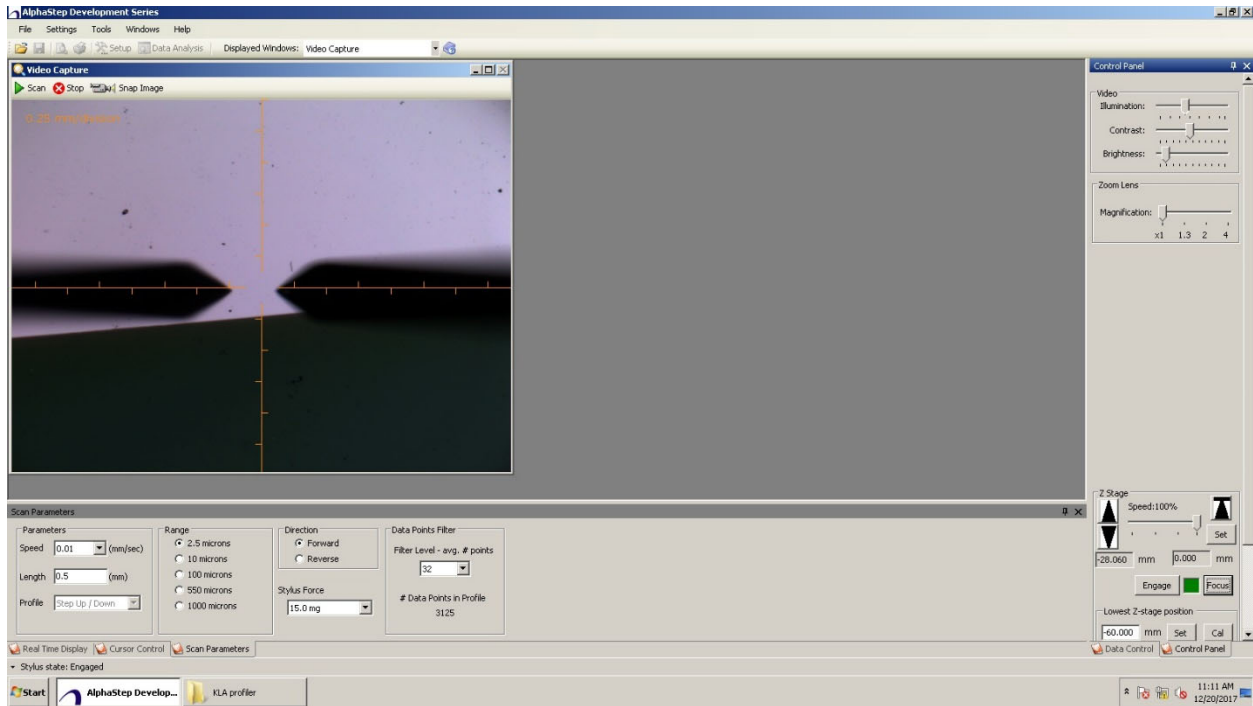
5. Close sample stage door cover.
6. User Stage control arrows to lower the stylus:
 - (a) **DOWN arrow** to have stylus **close (1-2 cm)** to sample.
 - (b) Click **"Focus"**. The system will automatically lower the stylus to the surface and then up.
 - (c) To allow further stage movement to adjust the step position. The image of the surface will show up. Use finger **stage RED disk controls (X and Y)** to fine tune the position.



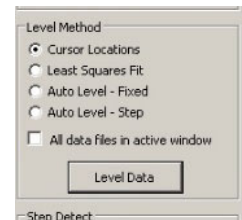
7. Choose the scan setting: Speed, Length, Range, Stylus Force and Filter Level.
Or choose existing scan recipe.

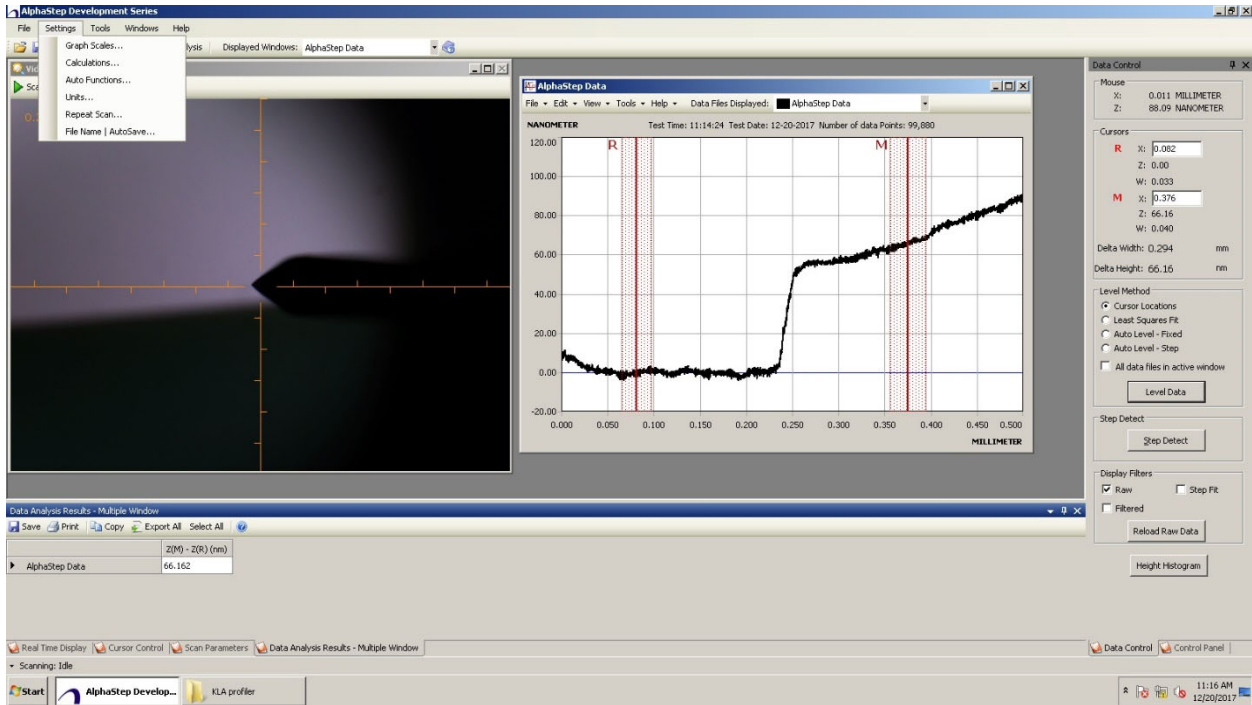


8. Scan sample by click "Scan" on top of the video window.



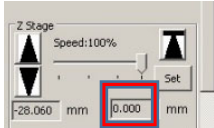

- Level the result curves by placing two red “R” and “M” vertical lines on one side of step. Choose “Cursor Locations” and click “Level Data”.





The thickness data is shown on the bottom of the video screen. To change units, go to “**Setting**” → “**Unit**”

Shut down steps

1. **Make**  **sure “0.00 mm” is the set value for Home position button. If not, manually raise the stage to 0 mm by pushing and holding “up arrow”. Home position to raise stylus safely up.**  Close the cover.
2. Close the software.
3. Turn off the main unit power switch on the back.
4. Log out of FOM from general usage computer.

